

eMOTUS5PB

SURFACE MOUNT CABINETS

Powered Loudspeakers - Stereo kit



PRODUCT OVERVIEW

eMOTUS5PB is a stereo loudspeaker kit including an active and a passive cabinet. eMOTUS5PB performs BT connection, balanced and unbalanced audio inputs. Moreover, it includes an IR remote control and 0-10VDC remote port for volume control. A professional and compact loudspeaker stereo kit, a user-friendly and cost-effective formula with a fantastic performance and a unique design that will easily fit in a massive number of multimedia applications: education classrooms, corporate meeting rooms, retail stores, etc. Available in white colour.

KEY FEATURES

- Stereo kit: 2x25W RMS
- 2-ways: 5" woofer + 1 " tweeter
- 2 analogue audio inputs (balanced- Euroblock and unbalanced- RCA)
- BT connection with priority (selectable)
- Sound source selection
- 2-band tone control
- Stereo/mono switch
- Remote port (RJ-45) for volume control (WPmVOL compatible)
- Auto stand-by
- Includes remote control, wall bracket and security steel cable
- Available in white finish

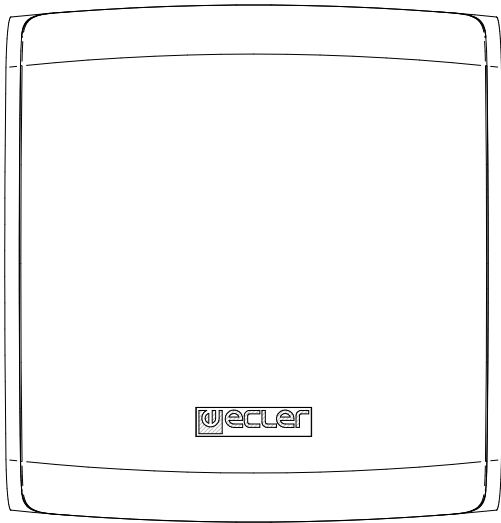
APPLICATIONS

- Classrooms
- Meeting rooms
- Multimedia presentations (in combination with video projectors, screens, etc.)
- Retail shops
- Museums and exhibitions
- Hotel rooms

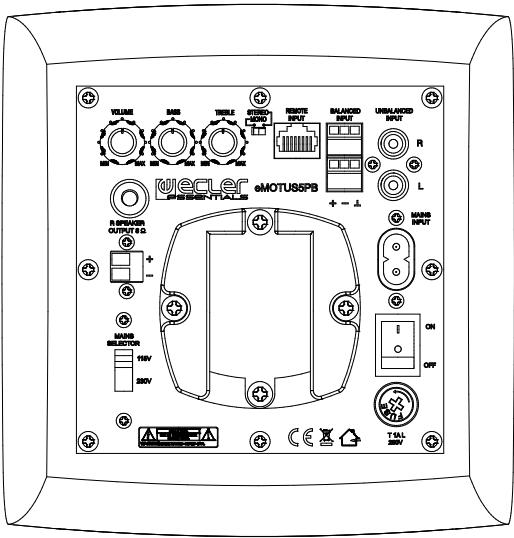
ACCESSORIES AND COMPATIBLE PRODUCTS

- WPaVOL

MECHANICAL DIAGRAMS

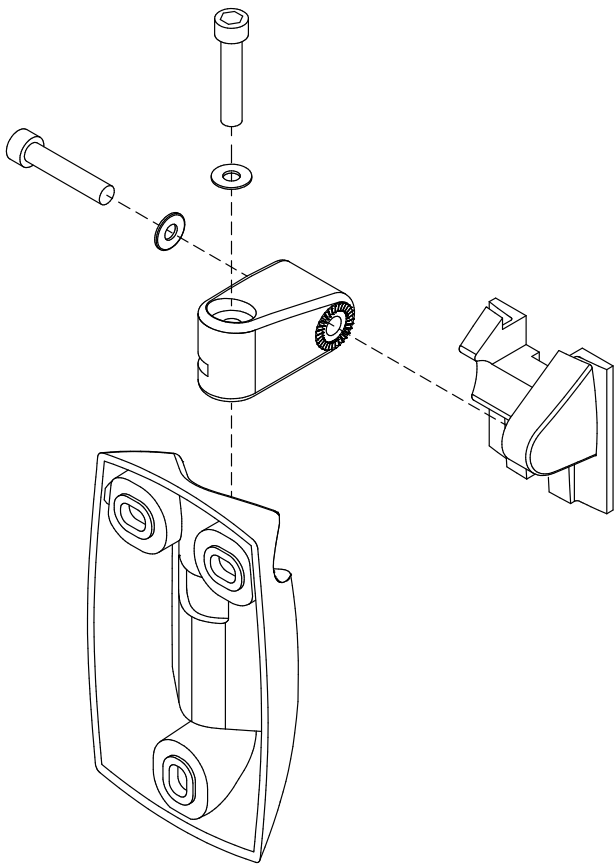


FRONT

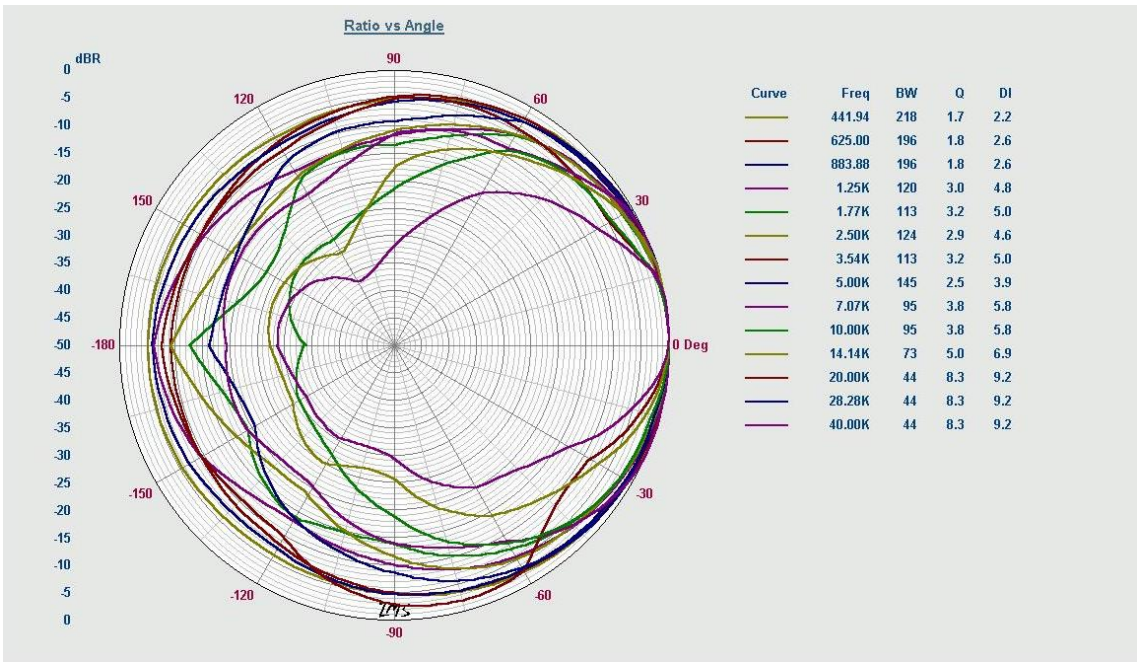


REAR

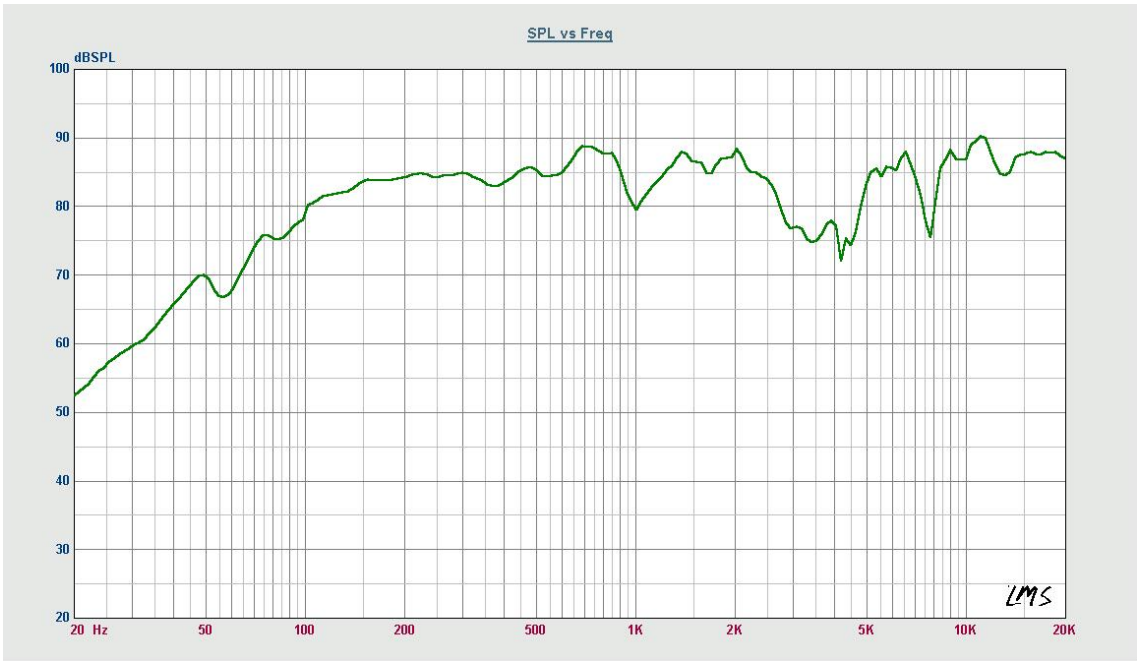
WALL SUPPORT MOUNTING DIAGRAM



POLAR DIAGRAMS



FREQUENCY RESPONSE



TECHNICAL DATA

eMOTUS5PB		
Power	2 x 25W RMS	
Impedance	8 Ω	
Frequency response (± 10 dB)	85Hz – 20kHz	
Maximum SPL (dB@1m)	91dB	
THD + Noise @ 1kHz Full PWR	$\leq 0.5\%$	
Inputs sensitivity nom/impedance	525mV/22k Ω	
CMRR - Line Bal	≥ 80 dB	
Tone control response	± 14 dB	
Mains voltage	115 / 230VAC (selectable)	
Power consumption (pink noise, 1/8 power @ 8ohm)	≤ 10.5 W	
Power consumption (pink noise, 1/3 power @ 8ohm)	≤ 23 W	
Power consumption Standby	≤ 3 W	
Construction	Aluminum grill, ABS cabinet	
Dimensions (WxDxH)	173x185x180mm - Not including brackets; 173x248x180mm - Including brackets	
Weight	4.8 kg – Not including accessories; 5.3 kg – Including accessories	
BT module		
	BT 4.0 Compliant	
	Class II Range up to 10 Meters	
	Supported BT Profiles: A2DP v1.2, AVRCP v1.4, HFP v1.6, HSP v1.2	
	aptX, SBC, MP3 and AAC decoder support	
Remote Control		
fosc	455 kHz	
Carrier frequency	38 kHz NEC format	
Battery	Lithium Cell CR2025 3V	