

APPLICATIONS

- Live sound
- Centralized, distributed or hybrid fixed installation
- Integration in installation global control systems
- Big Public Address zoned systems
- Installations requiring remote supervision, diagnostic and adjustment via Internet

ACCESSORIES



■ WPa Series



■ WPmSCREEN

NXA4BC:

- Sound Pressure Level Limiter/Controller (software)

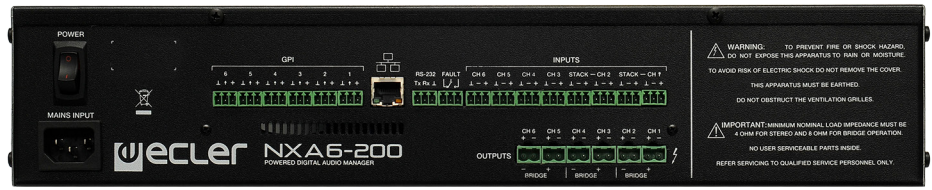
NXA is a series of a powered digital audio managers that stays halfway between a digital matrix and a multichannel amplifier. An "all-in-one" digital audio device that becomes a complete audio solution, including several remote control options and a long list of smart features.



NXA4-400



NXA6-200

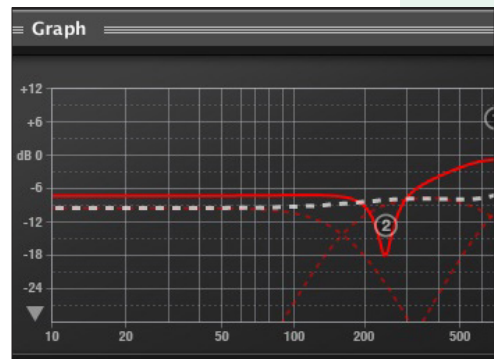
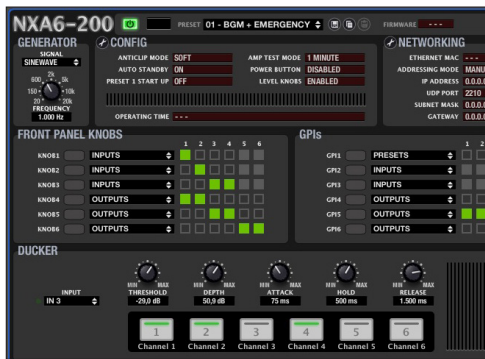
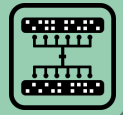


NXA6-200

KEY FEATURES

- NXA4-80 / NXA4-200 / NXA4-400 models: 4 analogue audio inputs x 4 powered audio outputs (80/200/400 W per channel, respectively). 4 GPI ports
- NXA6-80 / NXA6-200 models: 6 analogue audio inputs x 6 powered audio outputs (80/200 W per channel, respectively). 6 GPI ports
- Class D amplifiers (eco friendly)
- Auto stand-by function (eco friendly)
- 100% silent (fanless convection cooling system)
- Health self-test mode function, with FAULT RELAY (for an external redundancy system)
- Integrated anti-clip system
- Integrated DSP processor. Main features:
 - Inputs mixer independent per channel (all inputs available)
 - VOLUME, MUTE, SOLO, PHASE INVERSION, MAX. VOL limit and MIN. VOL limit, LP and HP Crossover filters, parametric EQ filters bank, Ducker, Delay, Compressor and more settings configurable per channel.
- Ethernet interface, compatible with EclerNet Manager platform and UCP remote control system
- TP-NET third-party remote control (compatible with CRESTRON®, AMX®, RTI®, VITY®, etc.)

	NXA4-80	NXA4-200	NXA4-400
1 channel @ 4Ω (RMS)	85W	202W	416W
1 channel @ 8Ω (RMS)	51W	121W	230W
All channels @ 4Ω (RMS)	66W	168W	330W
2 bridged channels @ 8Ω (RMS)	160W	383W	760W
Dimensions / Weight	HxWxD: 88 (2RU)x482,6x373mm / 8,6 kg.	HxWxD: 88 (2RU)x482,6x373mm / 11,1 kg.	HxWxD: 88 (2RU)x482,6x373mm / 15,6 kg.



NXA4-80



NXA4-80



NXA4-200



NXA4-200



NXA4-400



NXA4-400



NXA6-80



NXA6-80

	NXA6-80	NXA6-200
1 channel @ 4Ω (RMS)	84W	218W
1 channel @ 8Ω (RMS)	49W	126W
All channels @ 4Ω (RMS)	65W	163W
2 bridged channels @ 8Ω (RMS)	158W	399W
Dimensions / Weight	HxWxD: 88 (2RU)x482,6x373mm / 10,2 kg.	HxWxD: 88 (2RU)x482,6x373mm / 12,9 kg.