



IN-CEILING/ IC6CLASS Series

In-Ceiling/In-Wall Loudspeakers

APPLICATIONS

- Corporate and residential buildings
- Commercial premises, retail shops
- Leisure centres
- Sound reinforcement in clubs, bars, etc.
- Health and sports centres
- Meeting and conference rooms
- 5.1 and 7.1 surround systems
- Auditoriums, museums

IC6CLASS series integrates a very careful and efficient selection of components (6,5" woofer + 1" tweeter), together with a mechanical design that provide a high quality audio ("Hi-Fidelity" profile sound) and a very fast installation process, just using a basic set of tools.

IC6CLASS-54 2-way loudspeaker features a design which conforms to EN54-24 standard (Fire detection and fire alarm systems, Voice alarms - Loudspeakers), including a fire rated back can, ceramic connection terminals, thermal fuse and Internal FR wiring.



IC6CLASS-I



IC6CLASS-TR



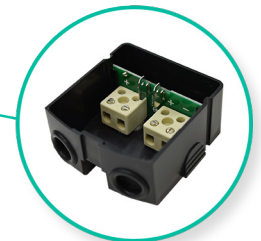
IC CLASS Series grid



IC6CLASS-54



IC6CLASS-54 Back can



IC6CLASS-54 Ceramic fuse holder

KEY FEATURES

IC6CLASS Series:

- High-end 2-way loudspeaker
- 16 Ω impedance, allowing for multiple units connected in parallel to a standard audio amplifier
- High impedance built-in transformer, allowing for multiple units connected in parallel to a 70V / 100V line audio amplifier (5 different power tapings available)
- Low/high impedance power selection accessible from the front panel, once the loudspeaker is already installed in the ceiling
- 6,5" Kevlar® woofer
- 1" Silk dome (ACCW) tweeter
- Aluminium front grill
- Fast installation procedure using a basic set of tools

IC6CLASS-I:

- No transformer, designed for low impedance installations

IC6CLASS-54:

- Fire rated back can
- Ceramic connection terminals
- Thermal fuse
- Internal FR wiring

	IC6CLASS-TR	IC6CLASS-I	IC6CLASS-54
RMS power / Program power (16Ω)	75W / 150W	75W / 150W	75W / 150W
Woofer / tweeter	6,5" / 1"	6,5" / 1"	6,5" / 1"
Power selector @ 100V	3/7,5/15/20/30 W	-	3/7,5/15/20/30 W
SPL 1W/1m	86 dB	86 dB	86 dB
Dimensions / Weight	∅ (internal)x ∅ (external)x D: 224x270x95mm / 2,5 kg.	∅ (internal)x ∅ (external)x D: 224x270x95mm / 2,1 kg.	∅ (internal)x ∅ (external)x D: 224x270x95mm / 3,1 kg.